



ZILCH The national network of
.org.uk individuals in the UK
working to eliminate
littering

Streetkleen
www.streetkleen.co.uk

Gary Downie

www.streetkleen.co.uk



ZILCH The national network of
.org.uk individuals in the UK
working to eliminate
littering

Daily Telegraph:

Ex-banker on £10,000 dog dirt crusade

27th Feb 2012



ZILCH The national network of
.org.uk individuals in the UK
working to eliminate
littering

How much dog waste is
created in the UK per day?

2560 tonnes Source Dogs Trust



ZILCH The national network of
.org.uk individuals in the UK
working to eliminate
littering

Where does it go?

95% is sent to landfill



What is the financial cost?

Hundreds of tonnes of dog mess left on Nottingham streets every year

Wednesday, October 31, 2012 By Delia Monk

About 200 tonnes of dog mess is left on streets, pavements and parks across the city every year

And clearing it up costs city taxpayers around £234,000 per year



What is the health cost?

Aimee Langdon
Platt Fields Park
Manchester
18th August 2010



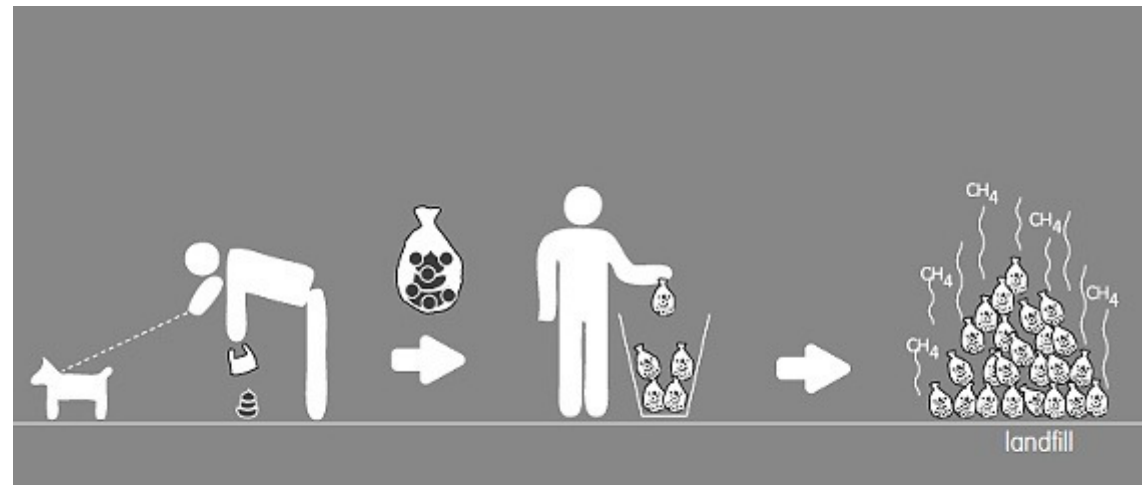


What the experts say

Royal College of Ophthalmologists
believe **80%** of all retinal
diseases can be traced back to
dog faeces



What is the environmental cost?



Methane is 30 times more potent than CO₂ as a greenhouse gas.



ZILCH The national network of
.org.uk individuals in the UK
working to eliminate
littering

What is the future?



What if?

Greater London “creates”
139,000 kilograms
or 139 tonnes of dog
waste daily.

If we capture 25%,
we could continuously
power the London Eye



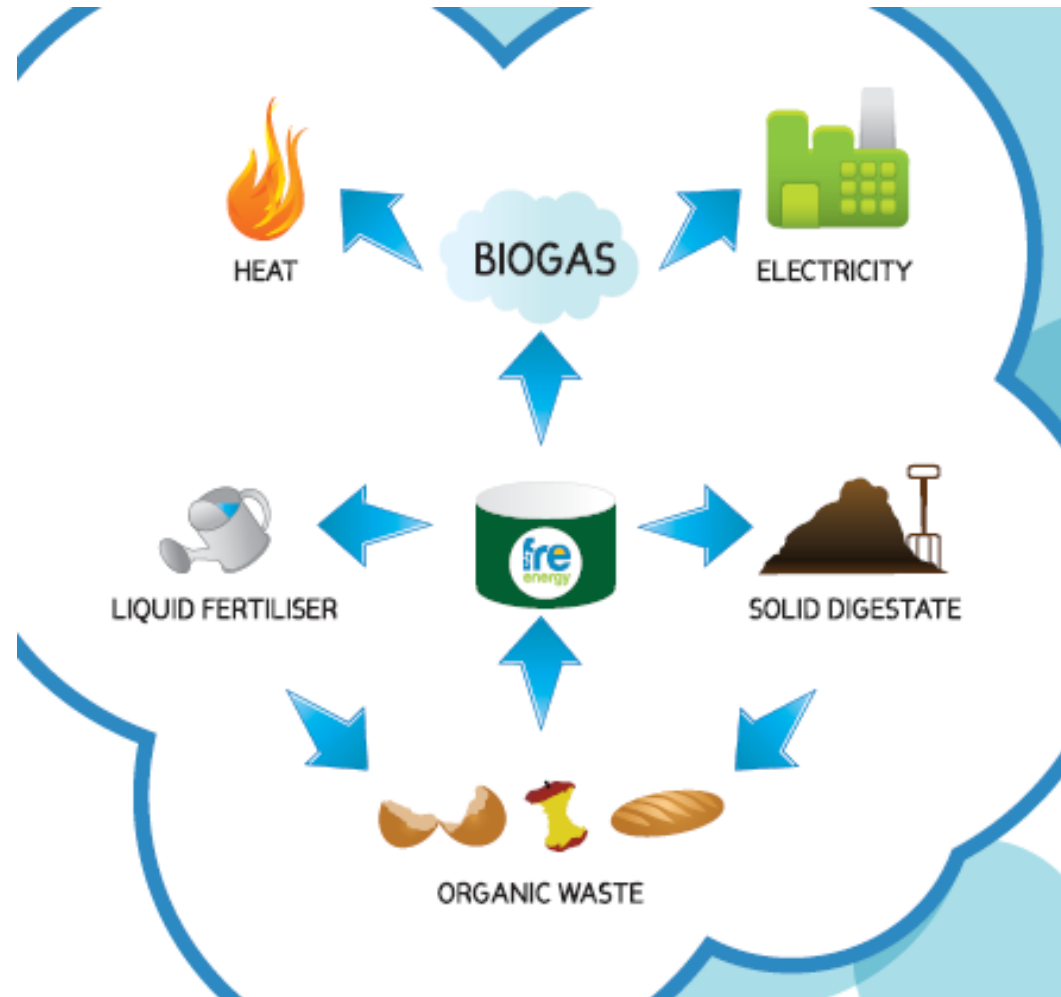


What is anaerobic digestion?

Anaerobic Digestion is a series of process that break down organic material in the absence of oxygen

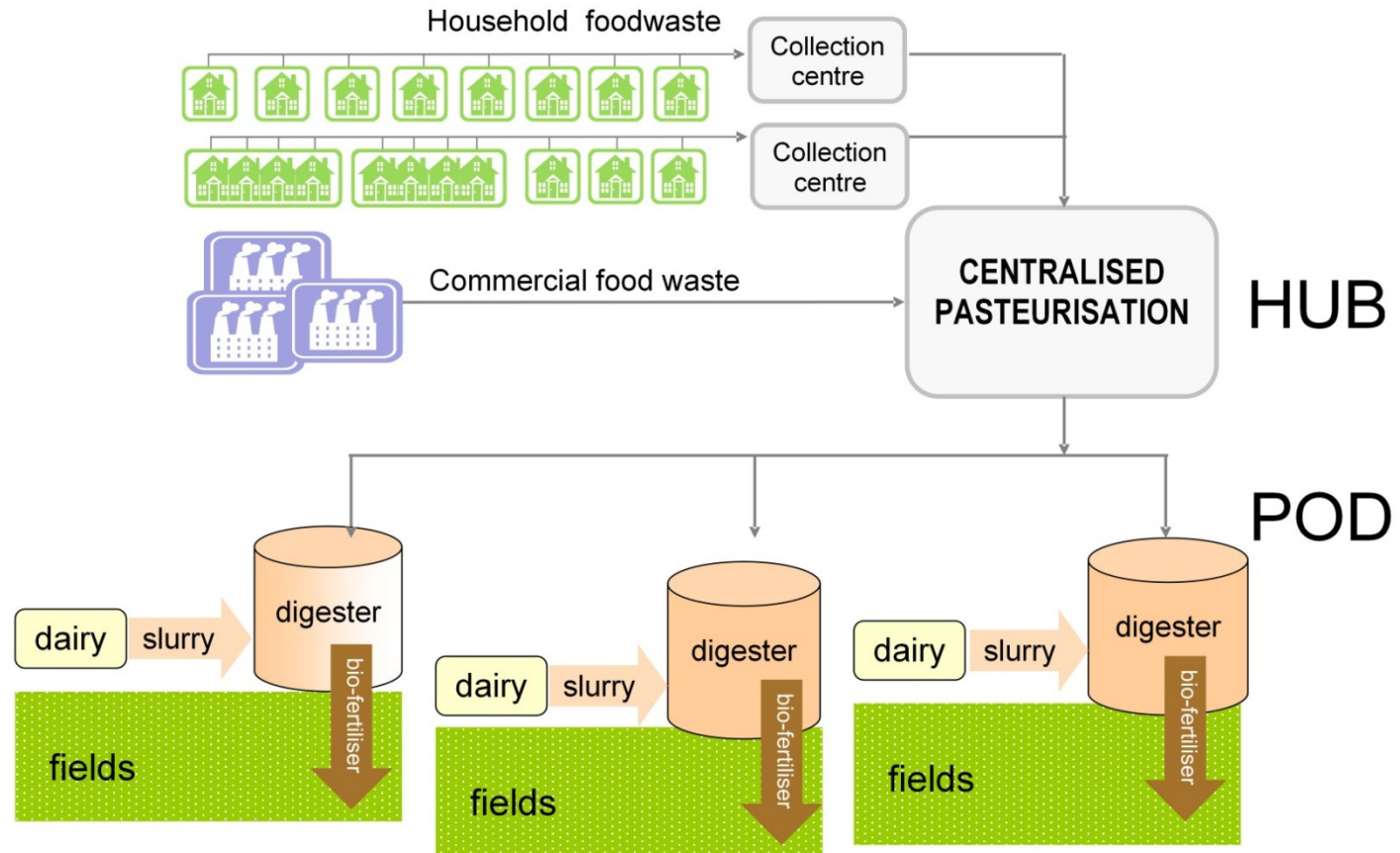
It is used for industrial or domestic purposes to manage waste and / or release energy

Wikipedia



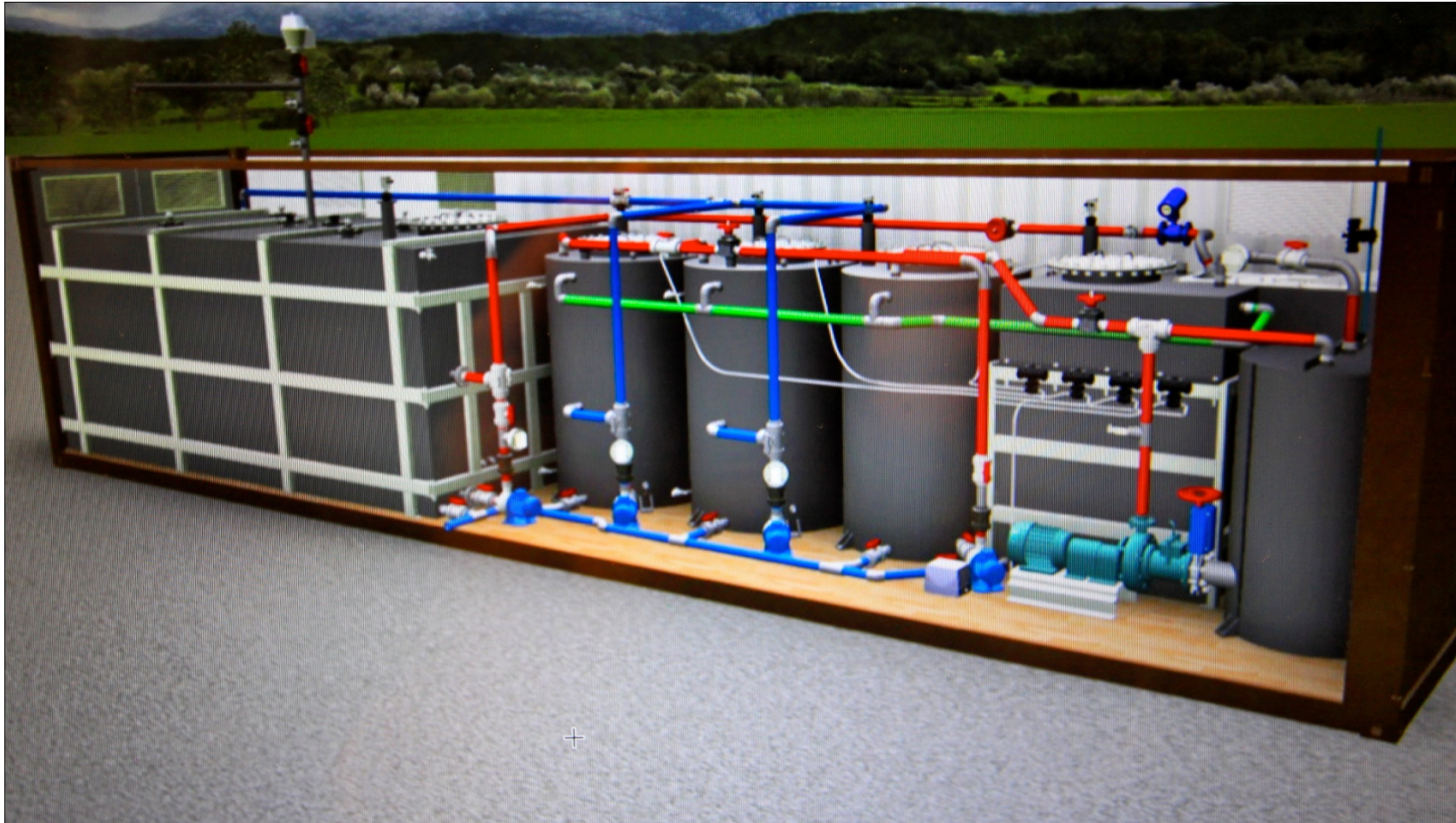


ZILCH .org.uk The national network of individuals in the UK working to eliminate littering



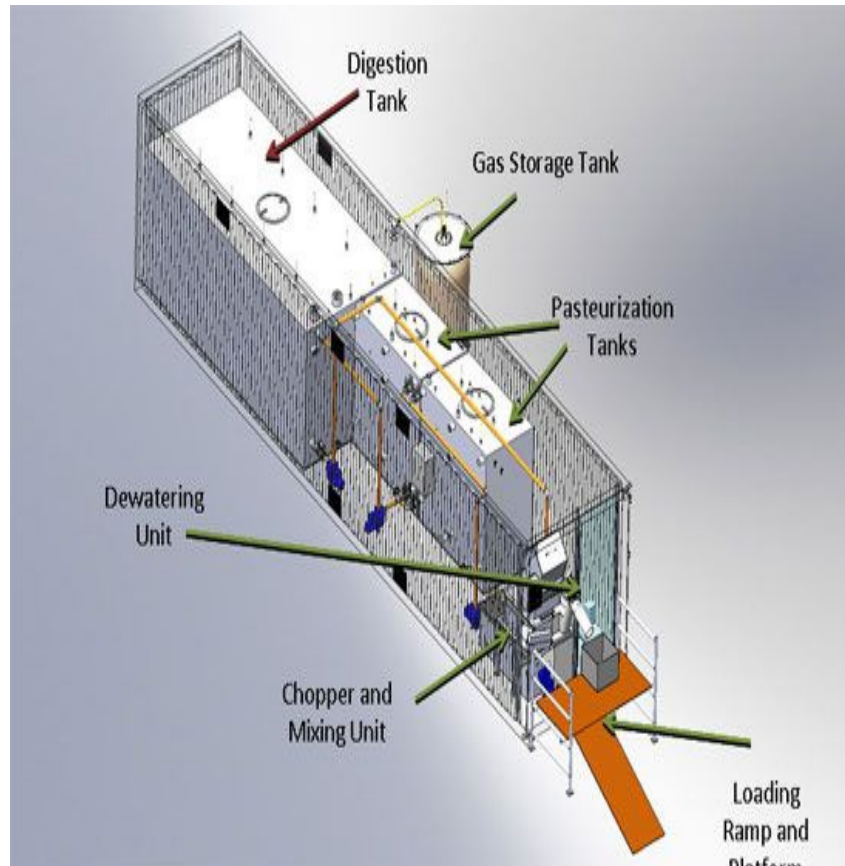


New 2013 Streetkleen Bio System





2013 Streetkleen Bio



- Reduce the cost of waste disposal and landfill tax
- Create renewable energy revenue from FiT's and RHI
- Meet obligations to EU Landfill Directive
- Capable of generating between 8 kWh - 55 kWh of renewable energy from dog and other organic waste
- Fully contained system
- Eliminate odour, runoff and pollution hazards



Making it happen

- ✓ The Dogs Trust
- New Battersea Cat & Dog's Home
- Cardiff Council
- Carnegie Trust
- WG High Potential Starts program



ZILCH The national network of
.org.uk individuals in the UK
working to eliminate
littering

Thank you
www.streetkleen.co.uk